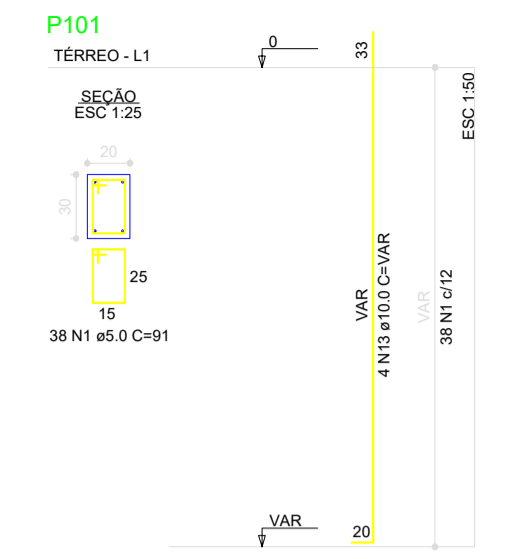
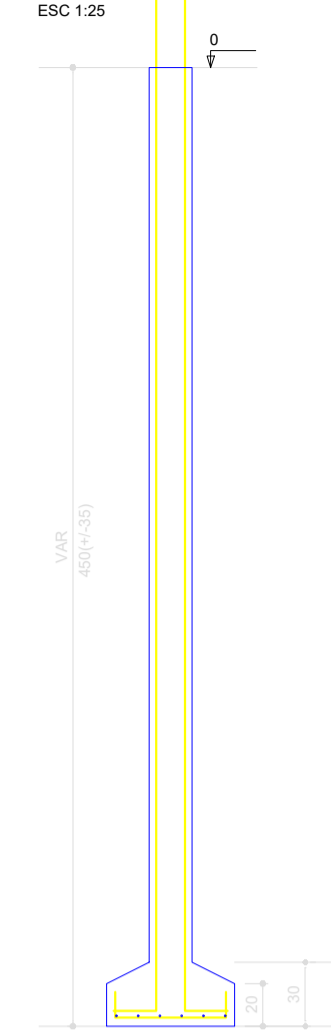
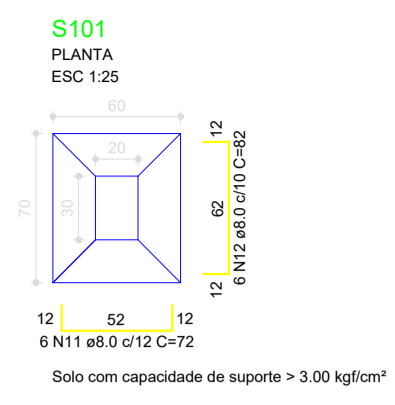
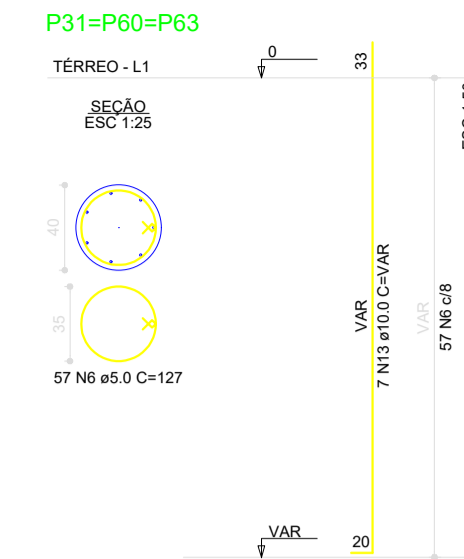
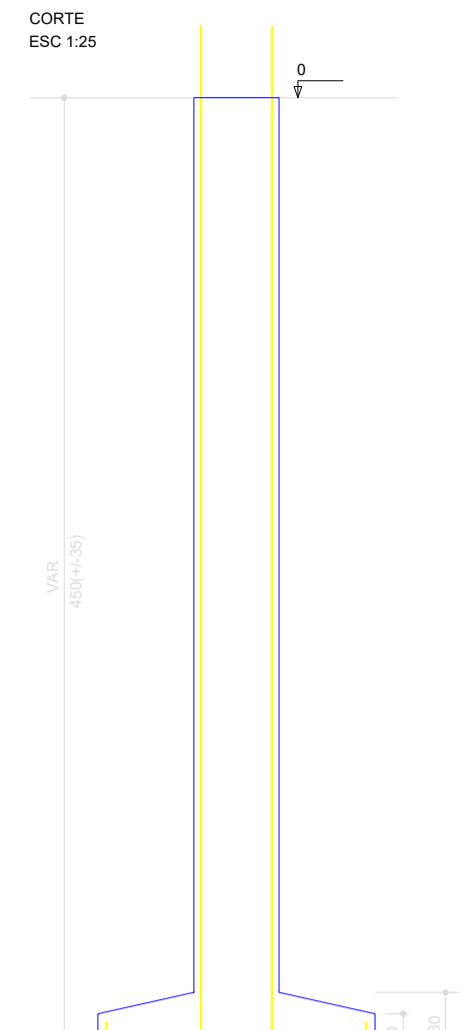
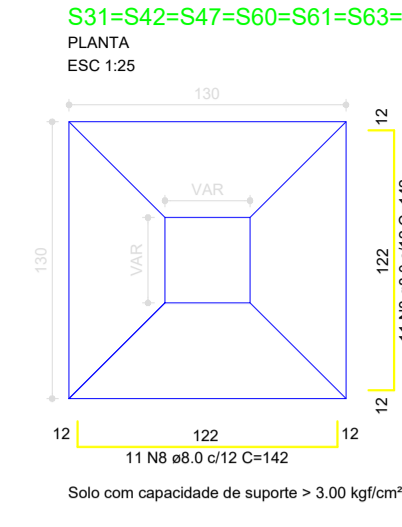
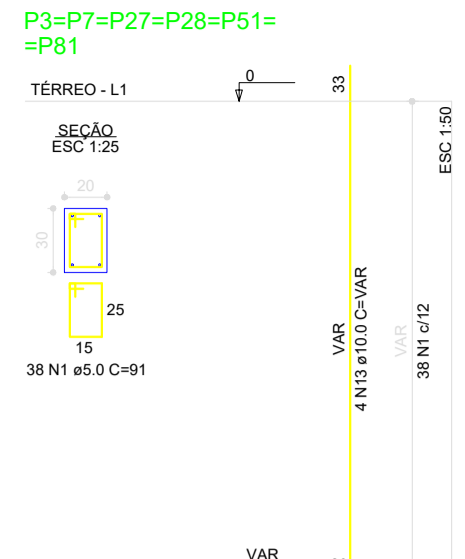
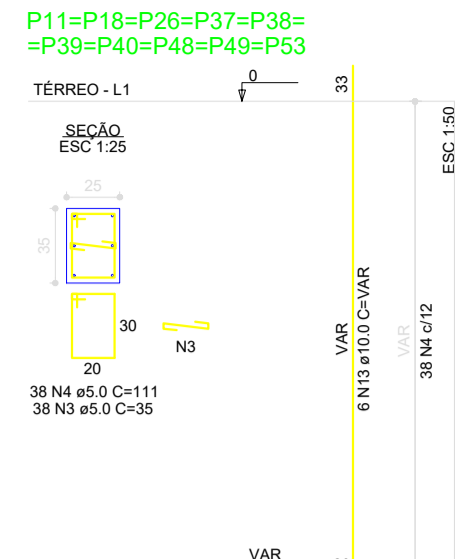
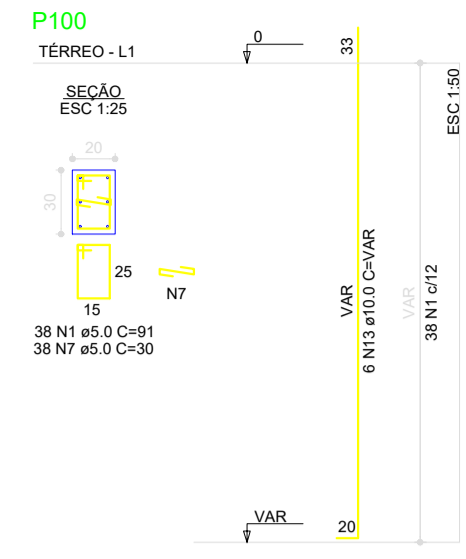
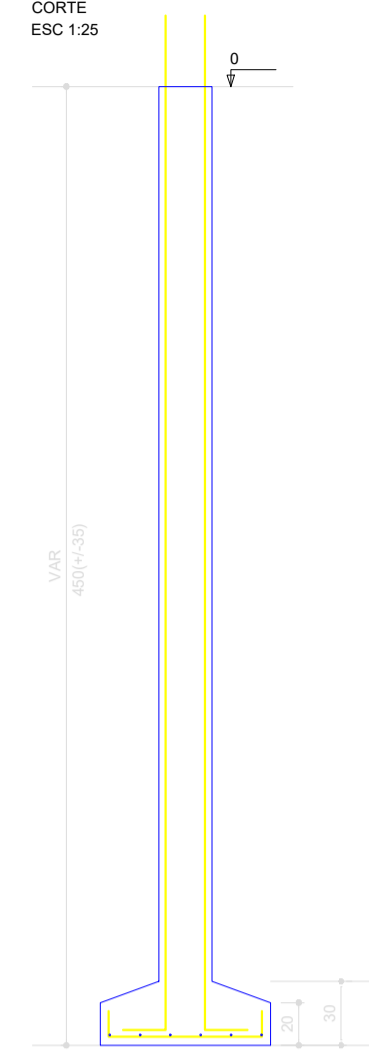
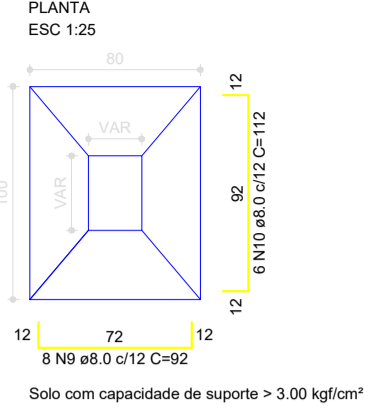


S3=S5=S7=S9=S11=S14=S16=S18=S23=S25=S26
 =S27=S28=S30=S35=S36=S37=S38=S39=S40
 =S48=S49=S51=S53=S56=S81=S100



RELACÃO DO AÇO

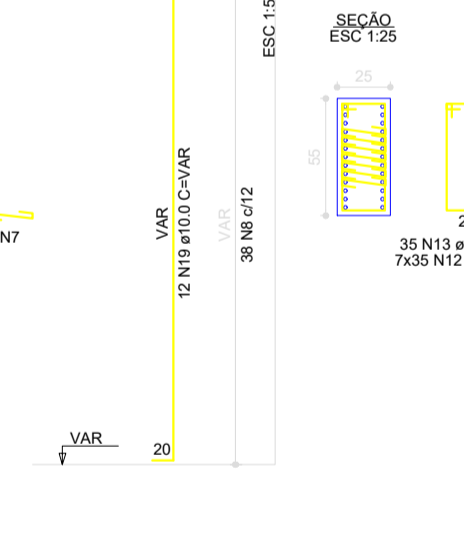
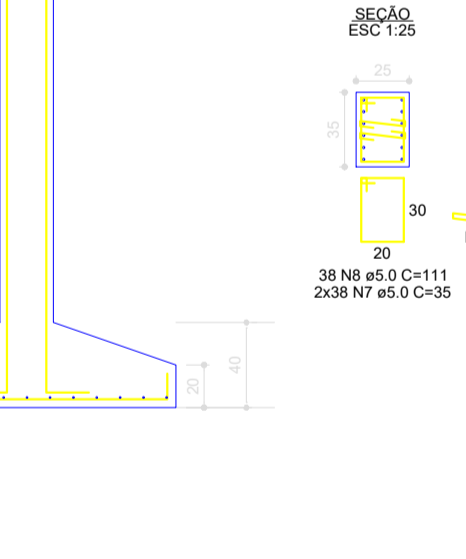
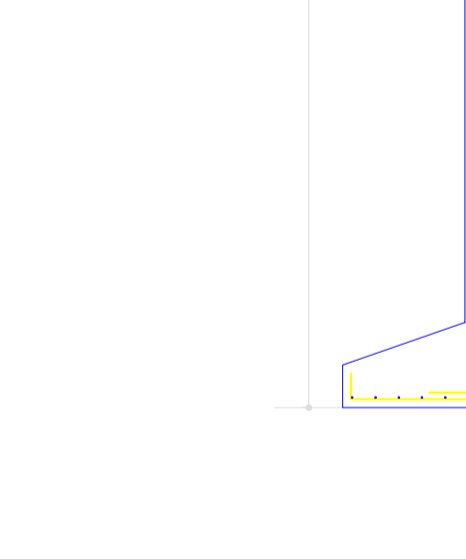
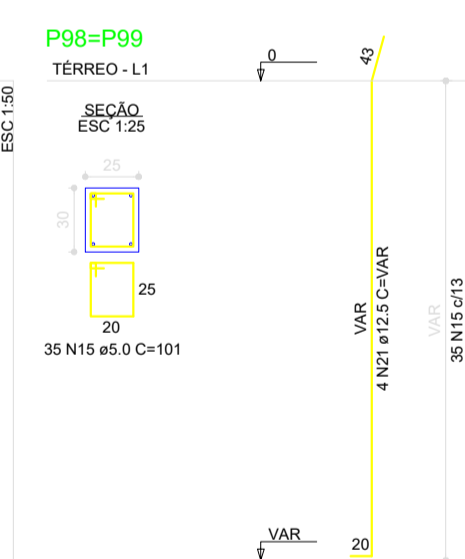
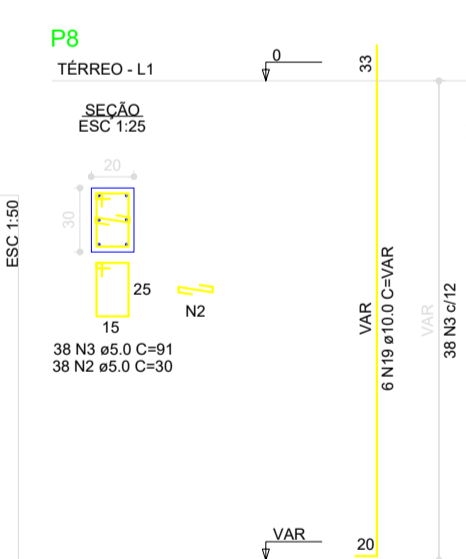
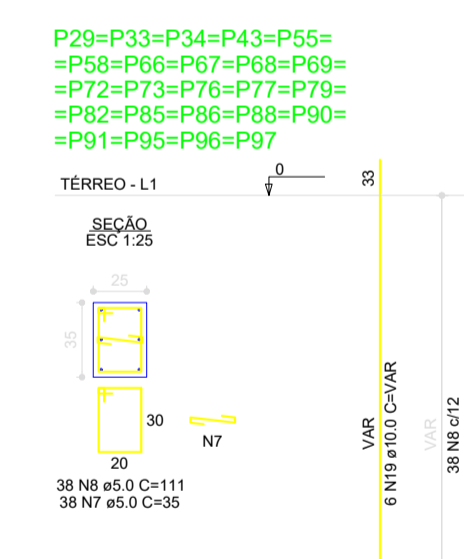
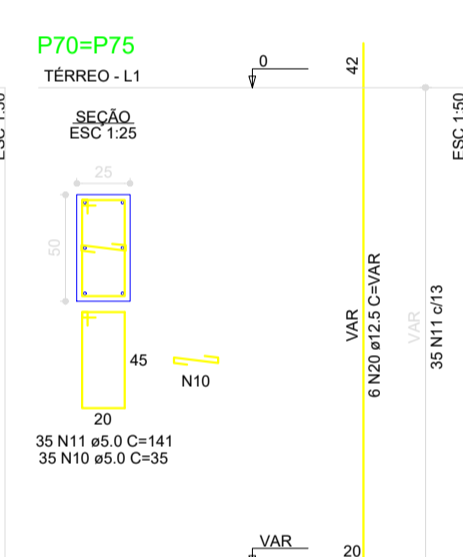
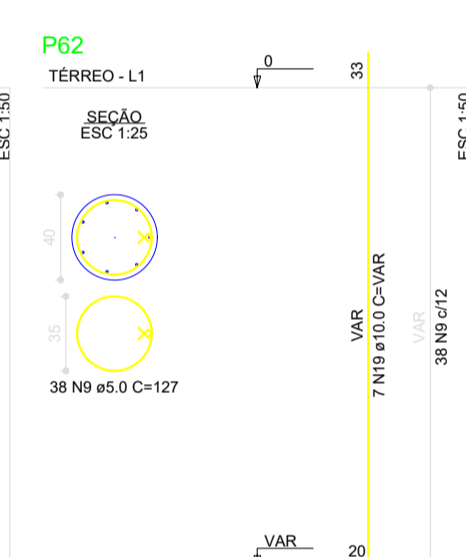
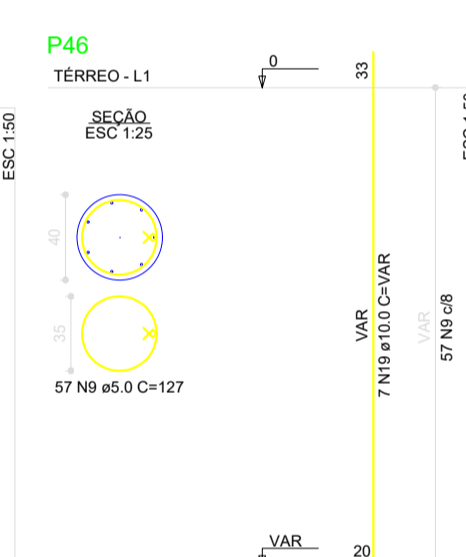
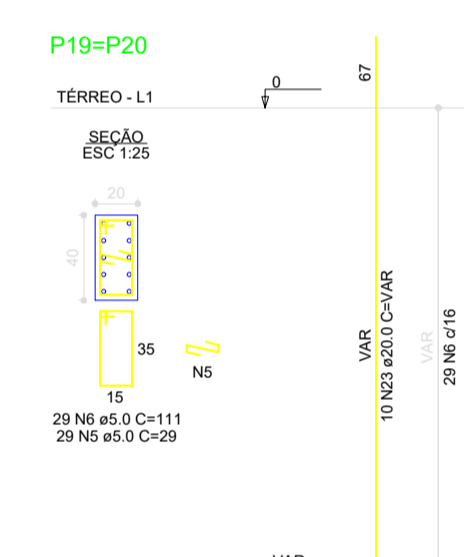
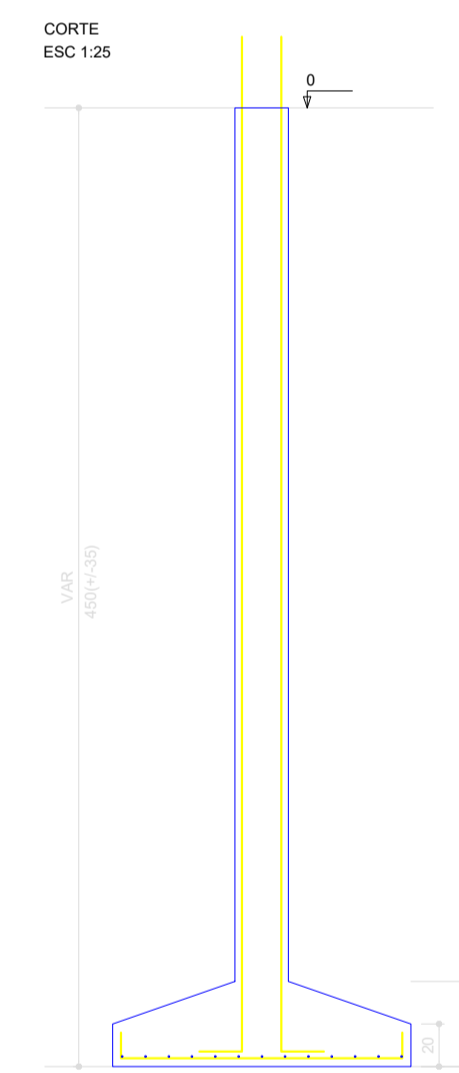
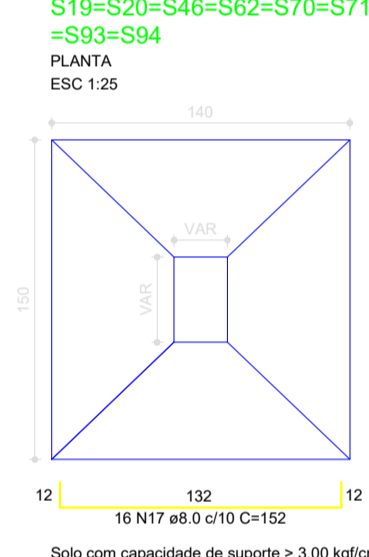
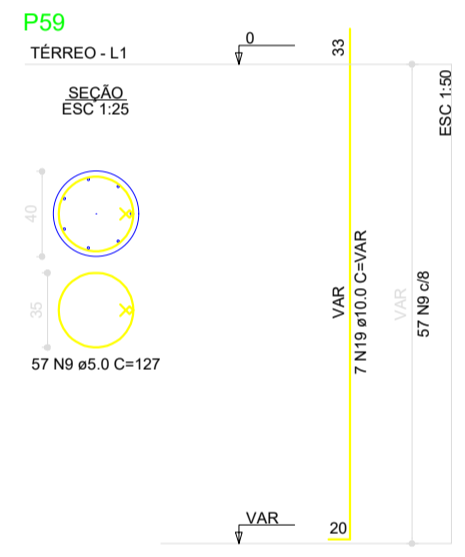
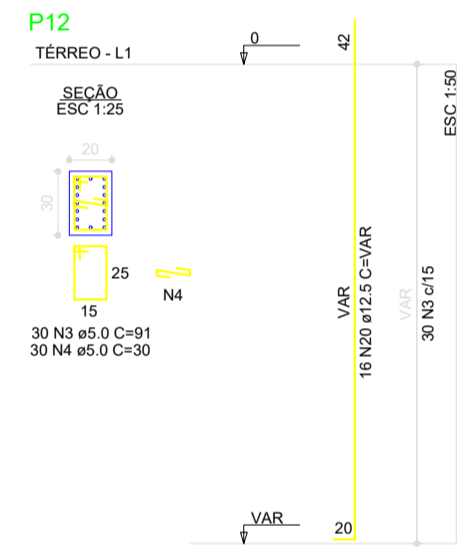
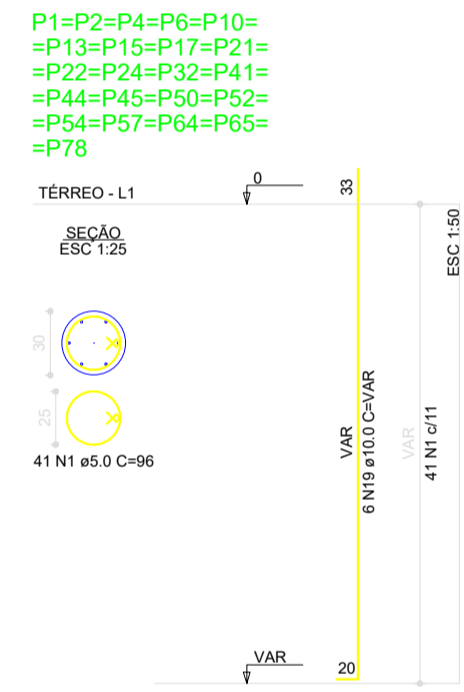
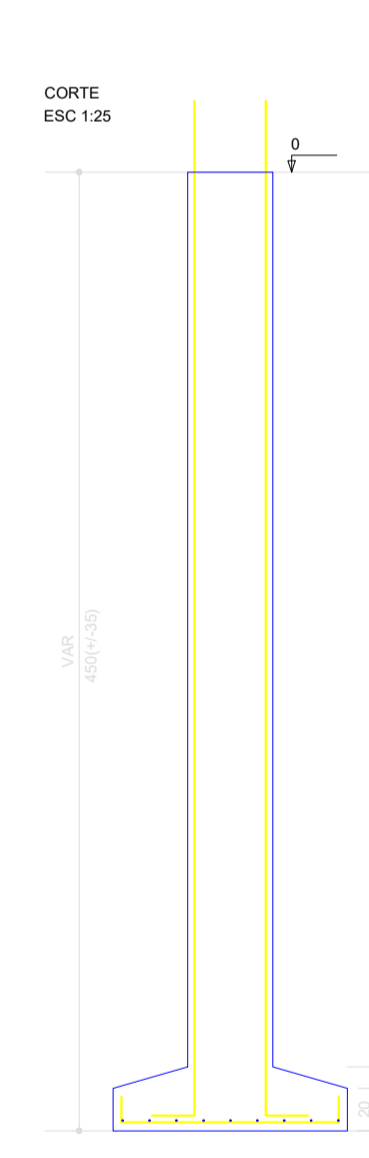
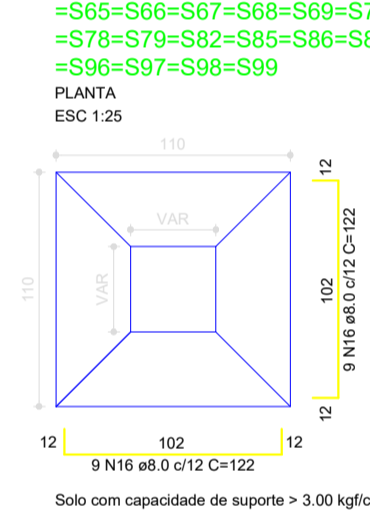
ACQ	N	DIAM (mm)	QUANT	C. UNIT (cm)	C. TOTAL (cm)
CABO	1	6.0	304	91	27684
CABO	2	6.0	304	81	24704
CABO	3	6.0	370	35	12950
CABO	4	6.0	485	11	5335
CABO	5	6.0	82	98	7972
CABO	6	6.0	171	17	2907
CABO	7	6.0	38	33	1254
CABO	8	6.0	200	42	8400
CABO	9	6.0	216	82	17712
CABO	10	6.0	82	112	9184
CABO	11	6.0	6	72	432
CABO	12	6.0	6	82	492
CABO	13	10.0	200	VAR	VAR

RESUMO DO AÇO

ACQ	DIAM (mm)	C. TOTAL (cm)	PESO + 10% (kg)
CABO	6.0	1018.9	304.6
CABO	10.0	1827.5	691
CABO	6.0	1827.5	309.5
CABO	6.0	288.4	93.8
CABO	6.0	306.5	103.8

Volume de concreto (C=30) = 23.34 m³
 Área de forma = 223.21 m²

S1=S2=S4=S6=S8=S10=S12=S13=S15=S17=S21
 =S22=S24=S29=S32=S33=S34=S41=S43=S44
 =S45=S50=S52=S54=S55=S57=S58=S59=S64
 =S65=S66=S67=S68=S69=S72=S73=S76=S77
 =S78=S79=S82=S85=S86=S88=S90=S91=S95
 =S96=S97=S98=S99



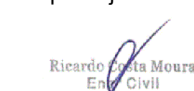
RELACÃO DO AÇO

ACQ	N	DIAM (mm)	QUANT	C. UNIT (cm)	C. TOTAL (cm)
CABO	1	6.0	902	96	86592
CABO	2	6.0	38	35	1330
CABO	3	6.0	68	91	6188
CABO	4	6.0	35	35	1225
CABO	5	6.0	58	29	1682
CABO	6	6.0	58	35	2030
CABO	7	6.0	1202	35	42070
CABO	8	6.0	885	111	98235
CABO	9	6.0	152	127	19304
CABO	10	6.0	76	36	2736
CABO	11	6.0	76	44	3364
CABO	12	6.0	245	36	8820
CABO	13	6.0	76	51	3876
CABO	14	6.0	76	51	3876
CABO	15	6.0	76	101	7676
CABO	16	6.0	818	122	100796
CABO	17	6.0	152	152	23084
CABO	18	6.0	152	152	23084
CABO	19	10.0	363	VAR	VAR
CABO	20	12.5	8	VAR	VAR
CABO	21	12.5	8	VAR	VAR
CABO	22	16.0	26	VAR	VAR
CABO	23	20.0	25	VAR	VAR

RESUMO DO AÇO

ACQ	DIAM (mm)	C. TOTAL (cm)	PESO + 10% (kg)
CABO	6.0	1664.2	522.2
CABO	10.0	1904.1	1223.0
CABO	12.5	181.8	132.7
CABO	16.0	153.8	232.0
CABO	20.0	155.4	286.0
CABO	6.0	3253.2	601.6
CABO	6.0	2887.4	551.8
CABO	6.0	351.8	103.8

Volume de concreto (C=30) = 46.71 m³
 Área de forma = 378.77 m²

REVISÕES			
Rev.	Data:	Descrição	
Elaboração: Prefeitura Municipal de Iracema—Ceará			
Obra: CONSTRUÇÃO DO MERCADO PÚBLICO DE IRACEMA – CE		Projeto: ESTRUTURAL	
Local: Avenida Projetada, S/N, Bairro Centro, Iracema—CE		Categoria: -	
Resp. Projeto:  Ricardo C. Moura CREA 11.590-D		Prancha: FUNDAÇÕES: SAPATAS 02/14	
Desenho: -		Escala: INDICADA	
Data: AGOSTO/2018			